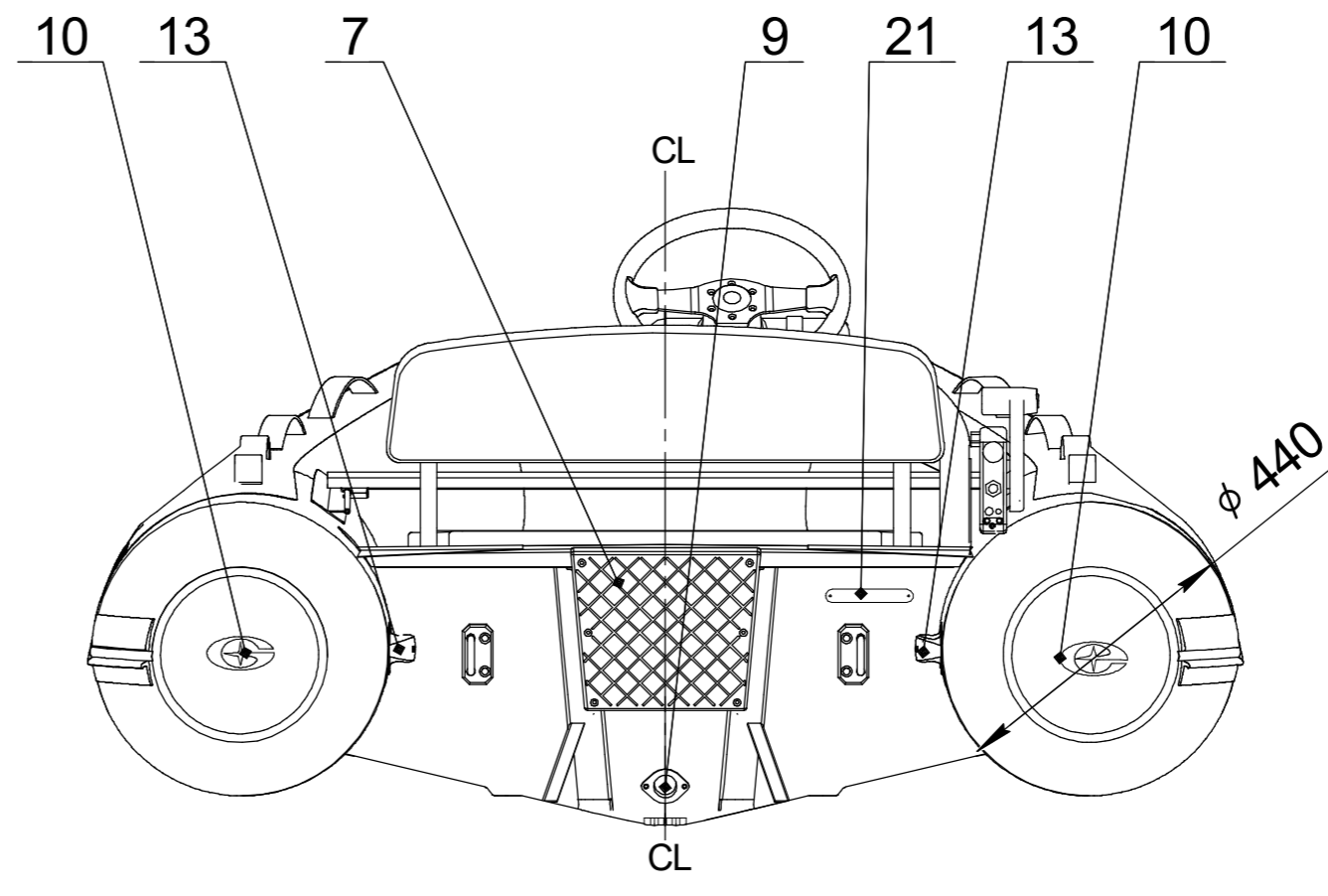
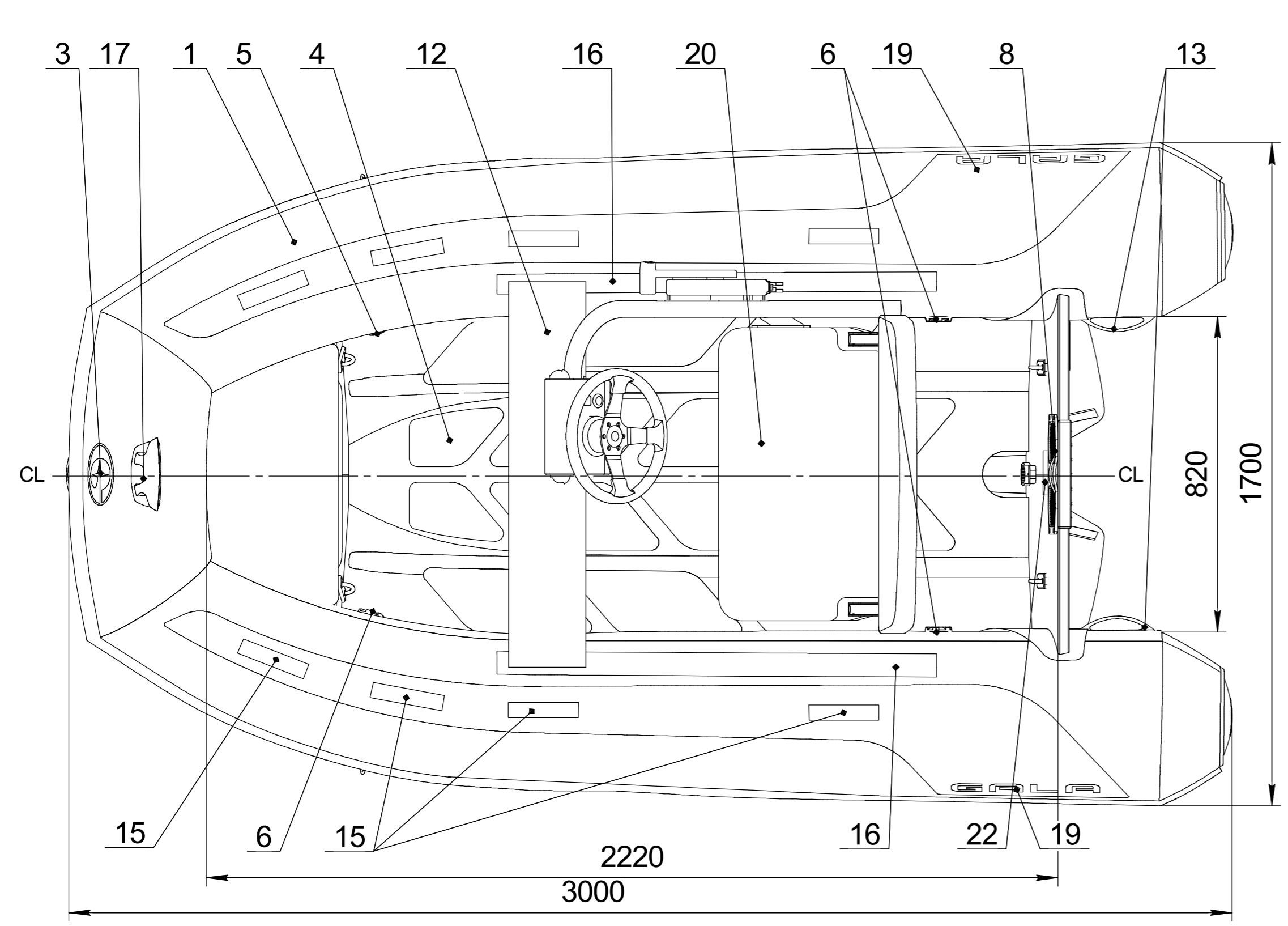
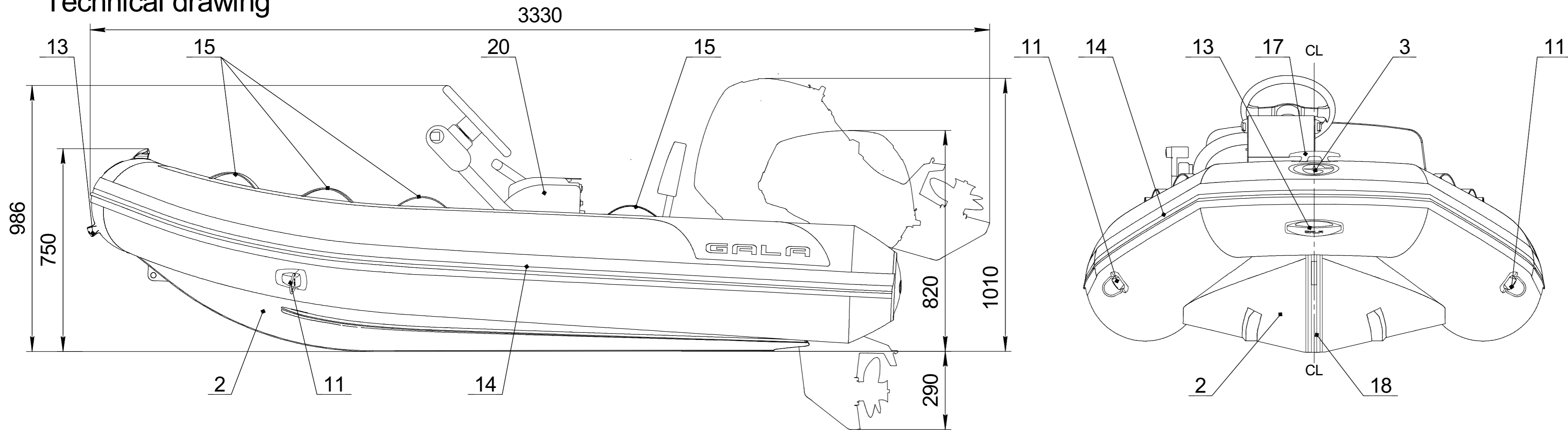


# Inflatable boat GALA Atlantis A300Q

Technical drawing



## Builder's plate

**GALA**  
INFLATABLE BOATS

Model **A300Q**    **5** + **1**

+ + + **500** kg    **1100** lbs

**14.7** kW    **20** HP    Type **V**

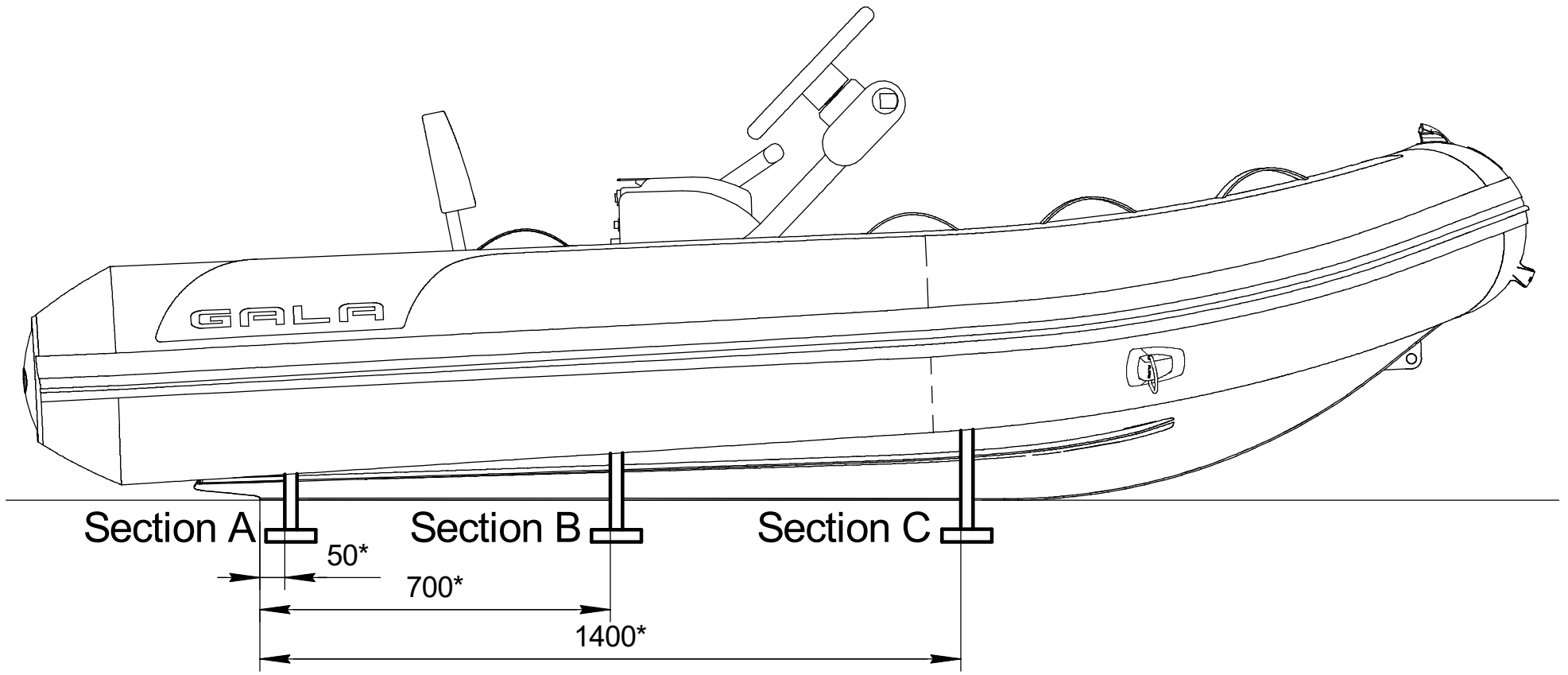
**60** kg    **132** lbs    Cat. **C**

**0.2** bar    **2.89** psi    International Standard ISO 9001-2015

## Boat specification

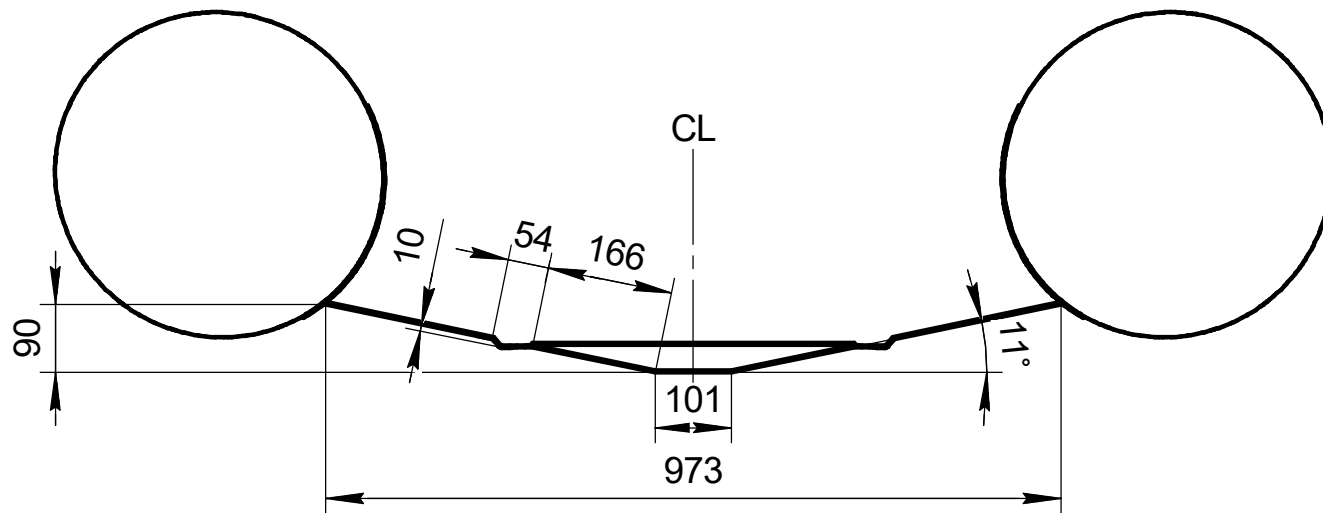
Item	Item No	Description	Q-ty	Note
1		Inflatable tube for A300Q	1	
2		Aluminum hull for A300Q	1	
3		GALA logo front	1	
4		Antiskid decking	1	
5		Over-pressure valve	1	
6		Inflation-deflation valve	3	
7		Motor plate external	1	
8		Motor plate internal	1	
9		Expanding drain plug	1	
10		Tube end, PVC	2	
11		Towing eye, PVC	2	
12		Aluminum seat	1	
13		GALA handle, PVC	3	
14		Rubbing strake	1	
15		Safety grab handle	8	
16		Seat holder	2	
17		Bow Cleat Large	1	
18		Keel protector	1	
19		GALA logo	2	
20		AQUAHELM Steering console S-08	1	
21		CIN plate	1	
22		Builder's plate	1	
23				
24				

DRAWN	NAME	DATE	ITEM No:
CHECKED			TITLE:
ENG APPR.			<b>GALA Atlantis A300Q</b>
MFG APPR.			
Q.A.			
SIZE		DWG. NO.	REV
SCALE: 1:10		WEIGHT:	SHEET 1 OF 1

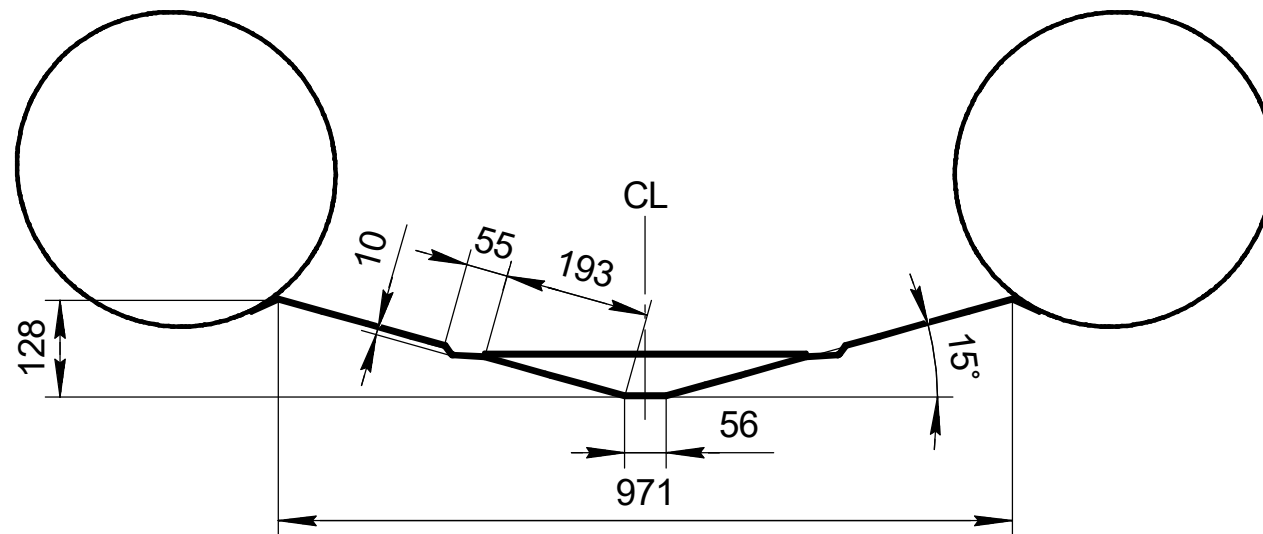


\* Dimensions are from the rear edge of the bottom.

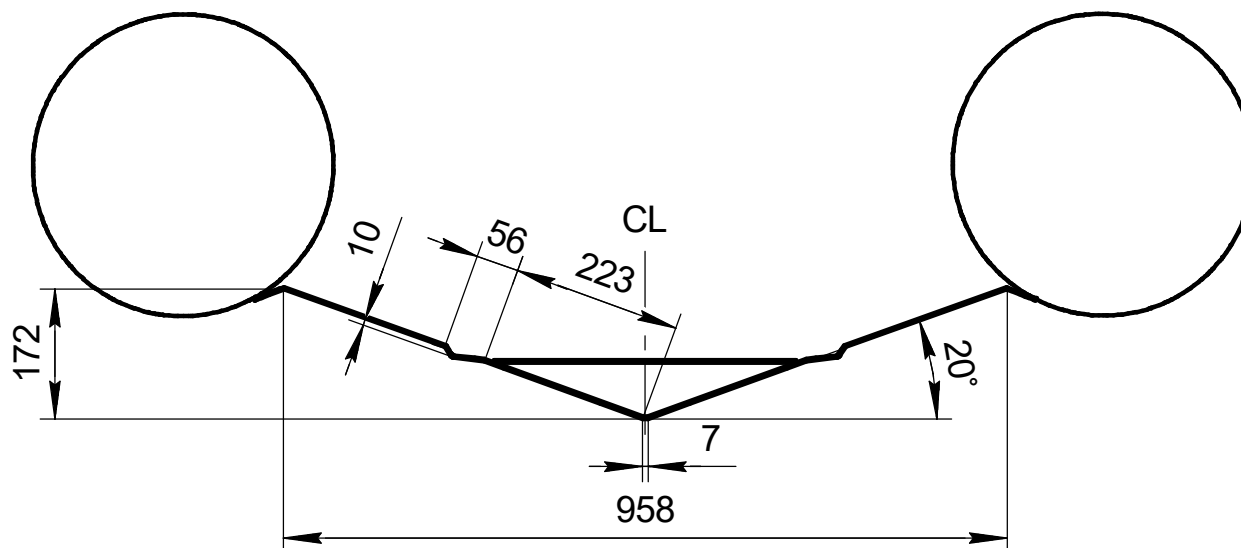
Section A



Section B



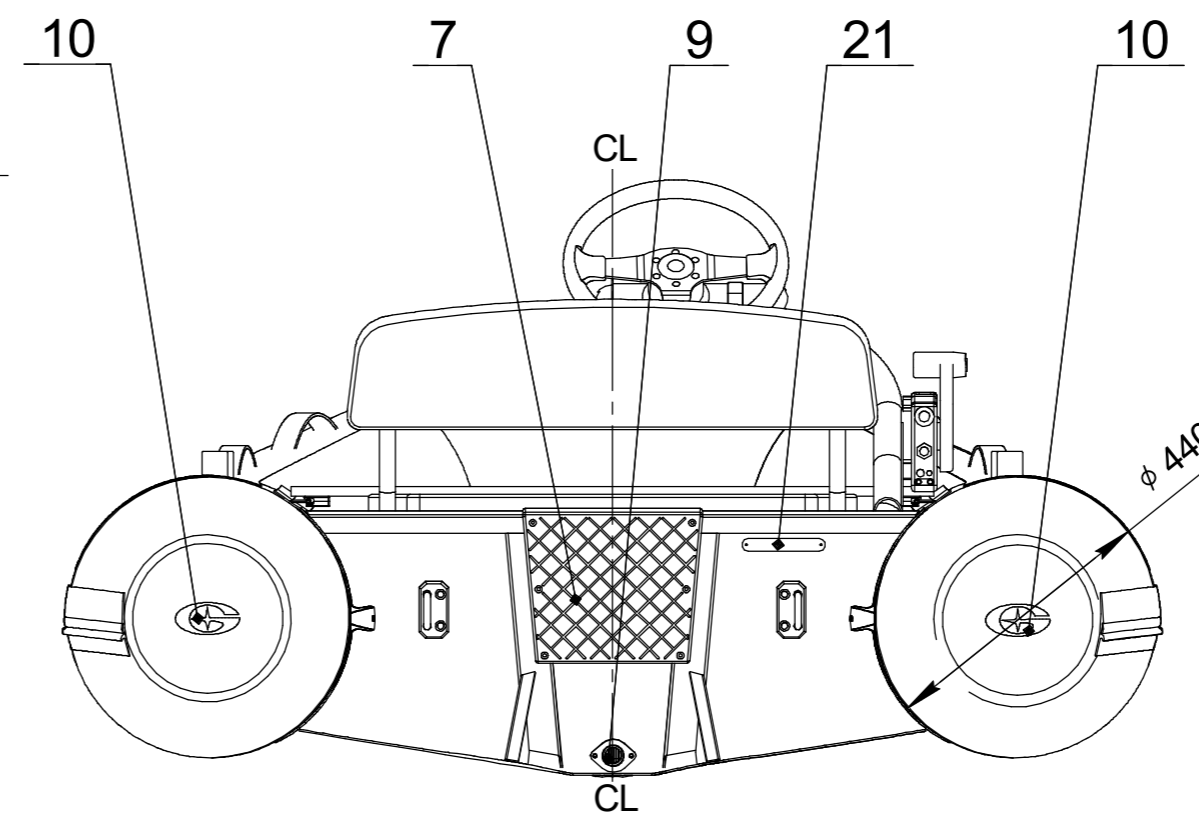
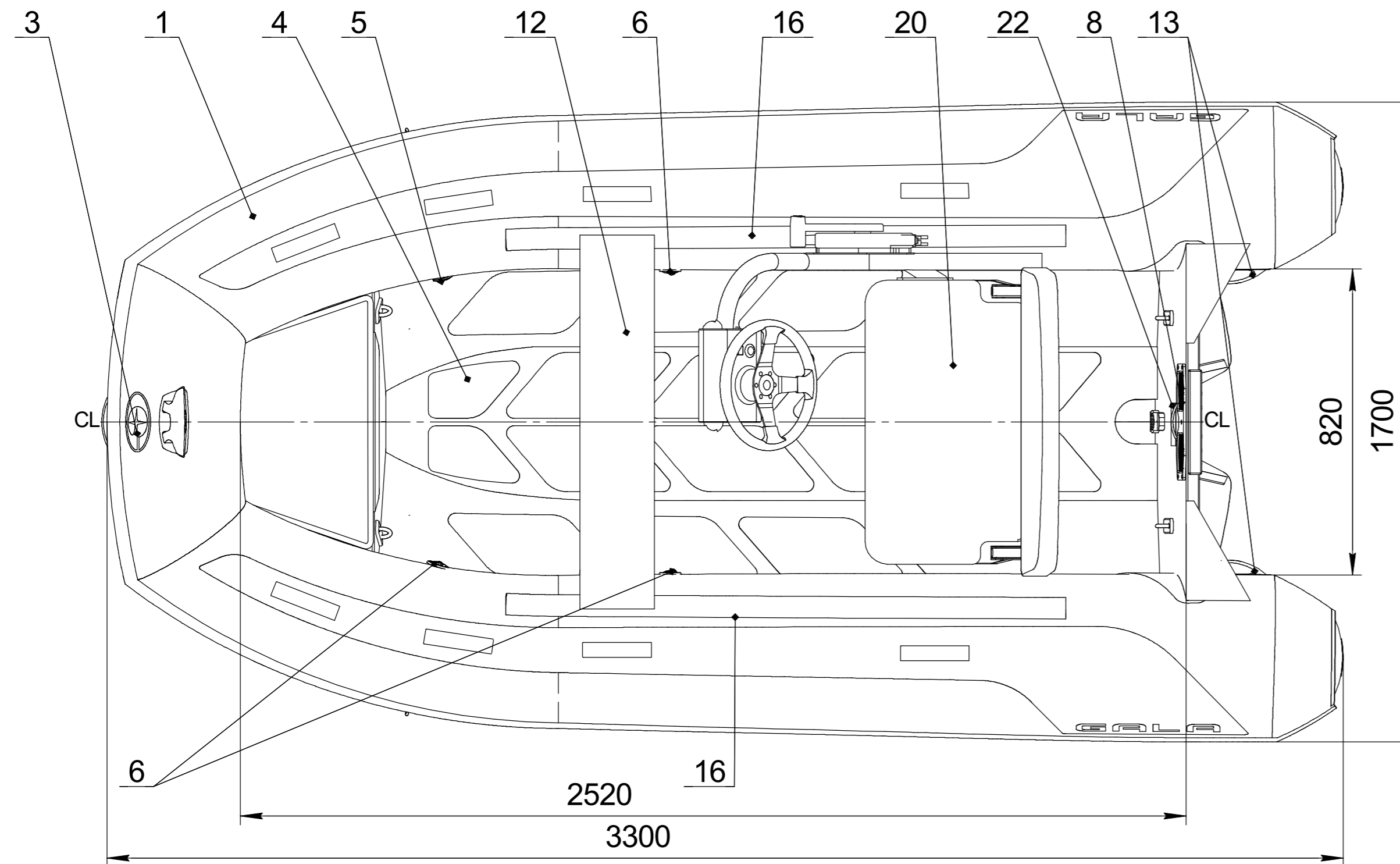
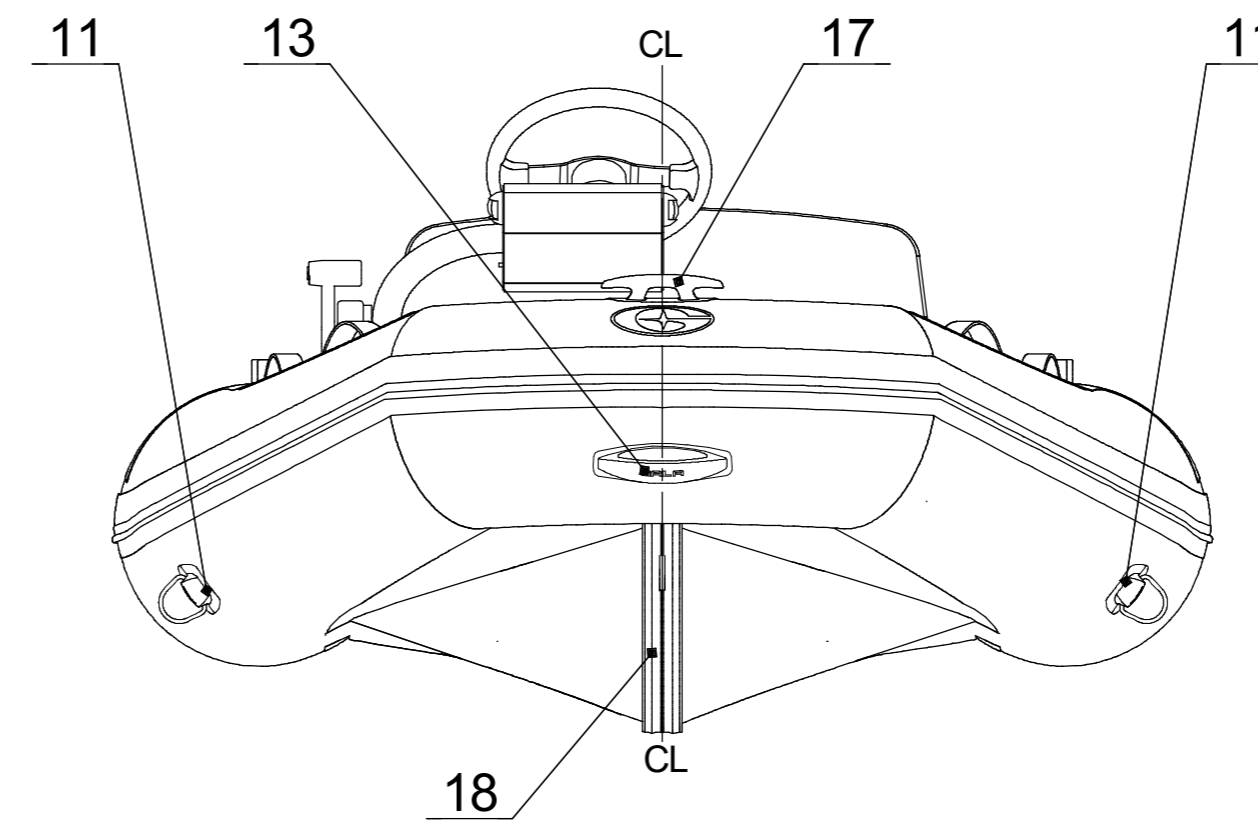
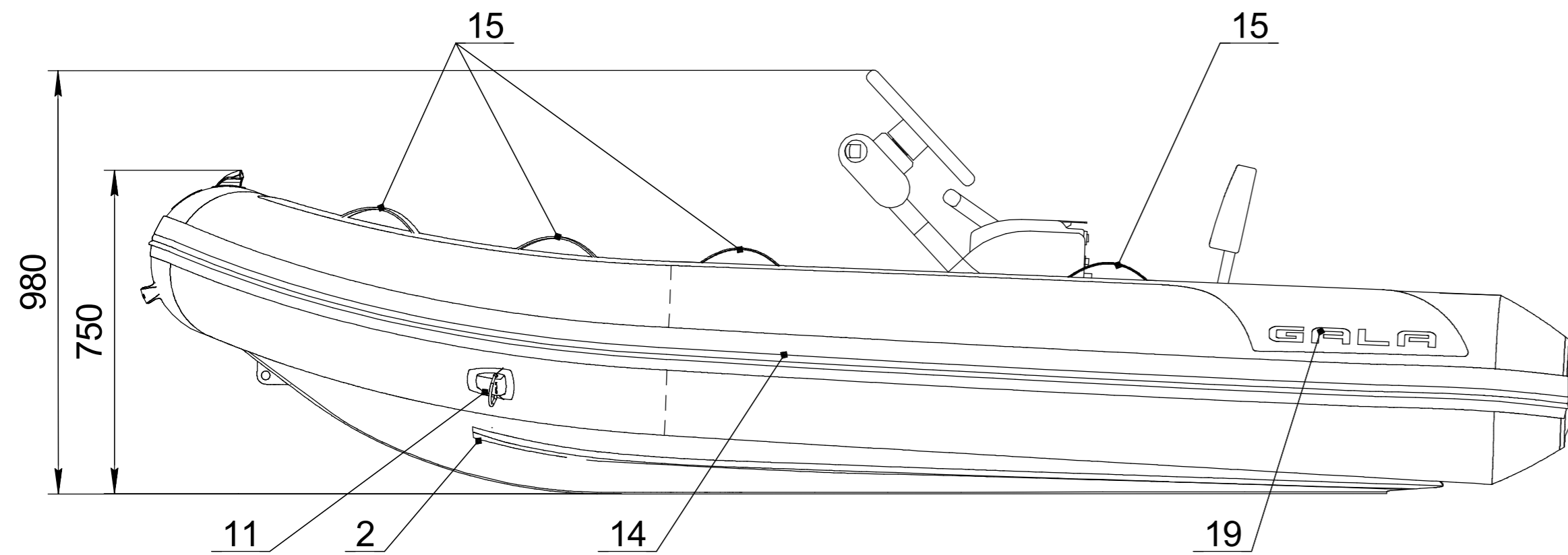
Section C



	NAME	DATE	ITEM No:
DRAWN			
CHECKED			TITLE:
ENG APPR.			<b>GALA Atlantis A300Q Hull sections for chocks design</b>
MFG APPR.			
Q.A.			
SIZE		DWG. NO.	REV
SCALE: 1:10		WEIGHT:	SHEET 1 OF 1

# Inflatable boat GALA Atlantis A330Q

Technical drawing



## Builder's plate

**GALA**  
INFLATABLE BOATS

Model: **A330Q**    **5** + **1**

**550** kg    **1210** lbs

**22.1** kW    **30** HP    Type **VII**

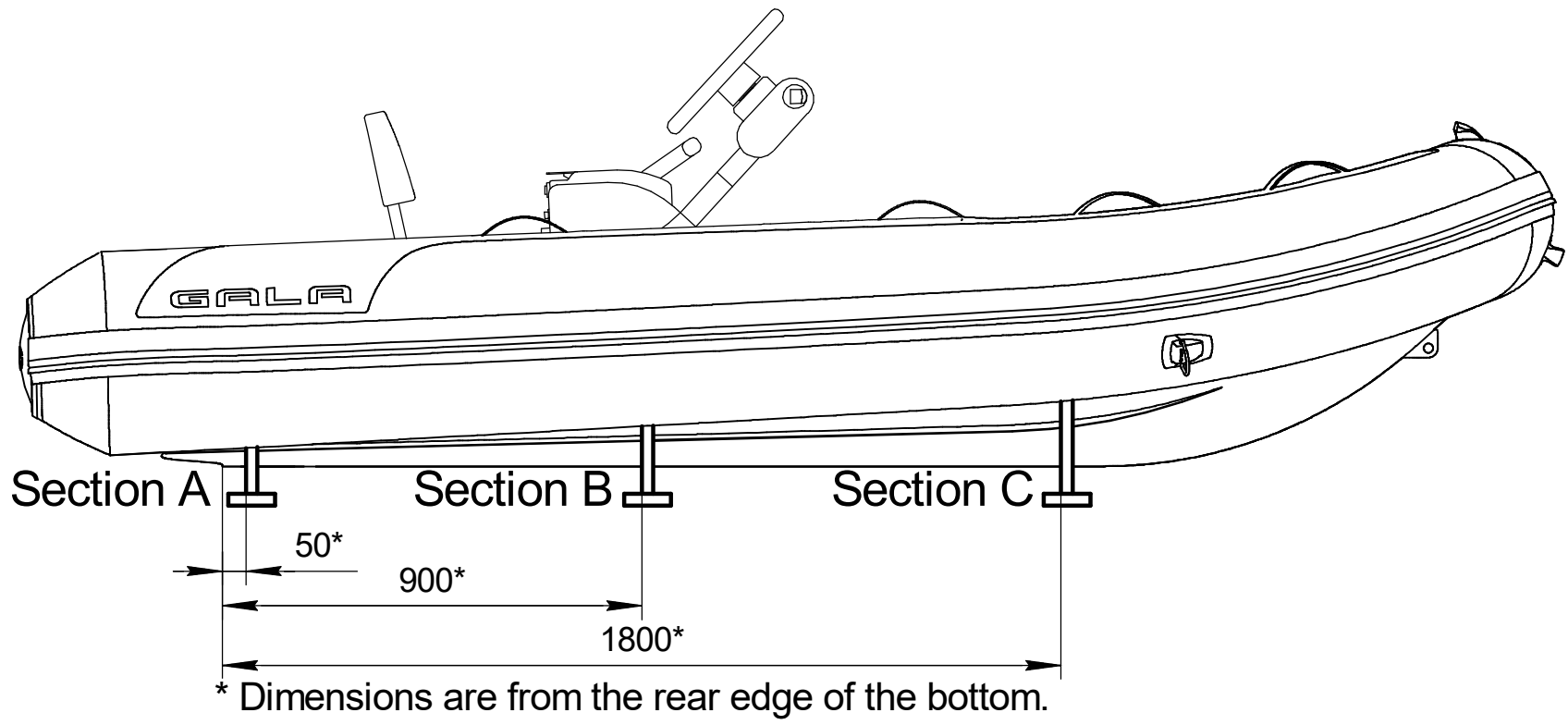
**70** kg    **154** lbs    Cat. **C**

**0.2** bar    **2.89** psi    International Standard ISO/FDIS-6185

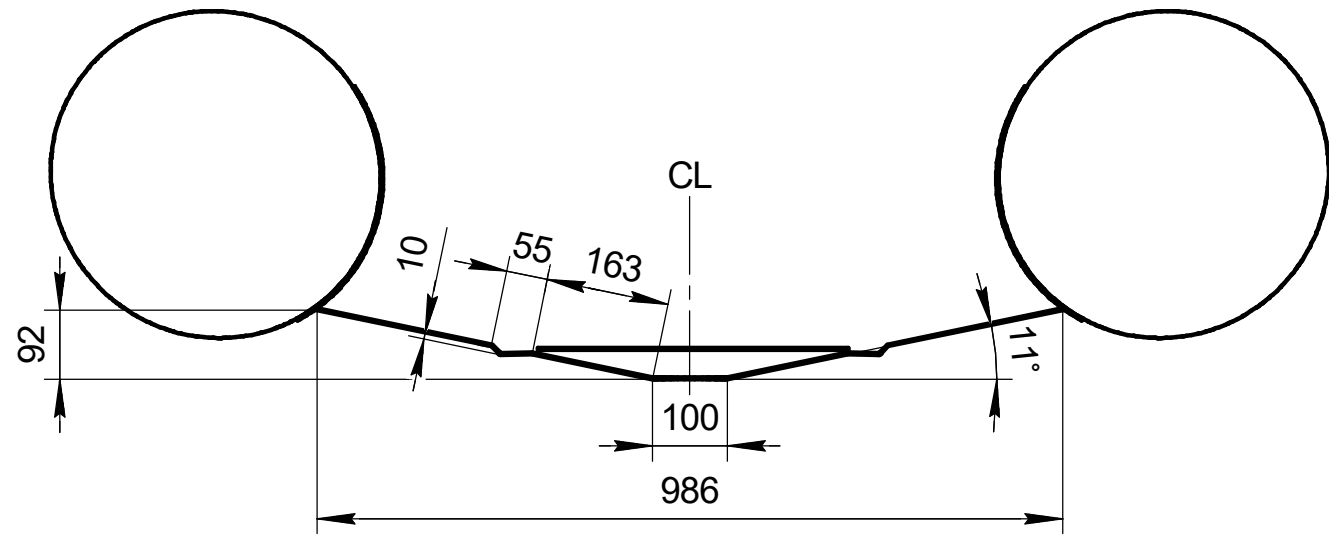
## Boat specification

Item	Item No	Description	Q-ty	Note
1		Inflatable tube for A330Q	1	
2		Aluminum hull for A330Q	1	
3		GALA logo front	1	
4		Antiskid decking	1	
5		Over-pressure valve	1	
6		Inflation-deflation valve	3	
7		Motor plate external	1	
8		Motor plate internal	1	
9		Expanding drain plug	1	
10		Tube end, PVC	2	
11		Towing eye, PVC	2	
12		Aluminum seat	1	
13		GALA handle, PVC	3	
14		Rubbing strake	1	
15		Safety grab handle	8	
16		Seat holder	2	
17		Bow Cleat Large	1	
18		Keel protector	1	
19		GALA logo	2	
20		AQUAHELM Steering console S-08	1	
21		CIN plate	1	
22		Builder's plate	1	
23				
24				

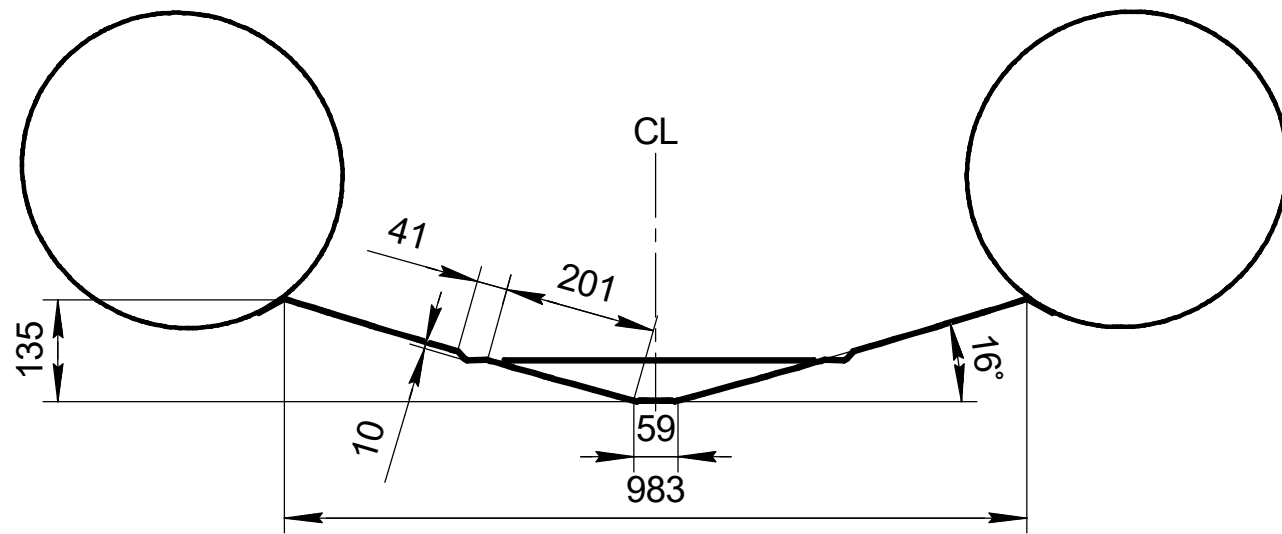
NAME	DATE	ITEM No:
DRAWN		TITLE:
CHECKED		<b>GALA Atlantis A330Q</b>
ENG APPR.		
MFG APPR.		
Q.A.		
SIZE	DWG. NO.	REV
SCALE: 1:10		WEIGHT:
		SHEET 1 OF 1



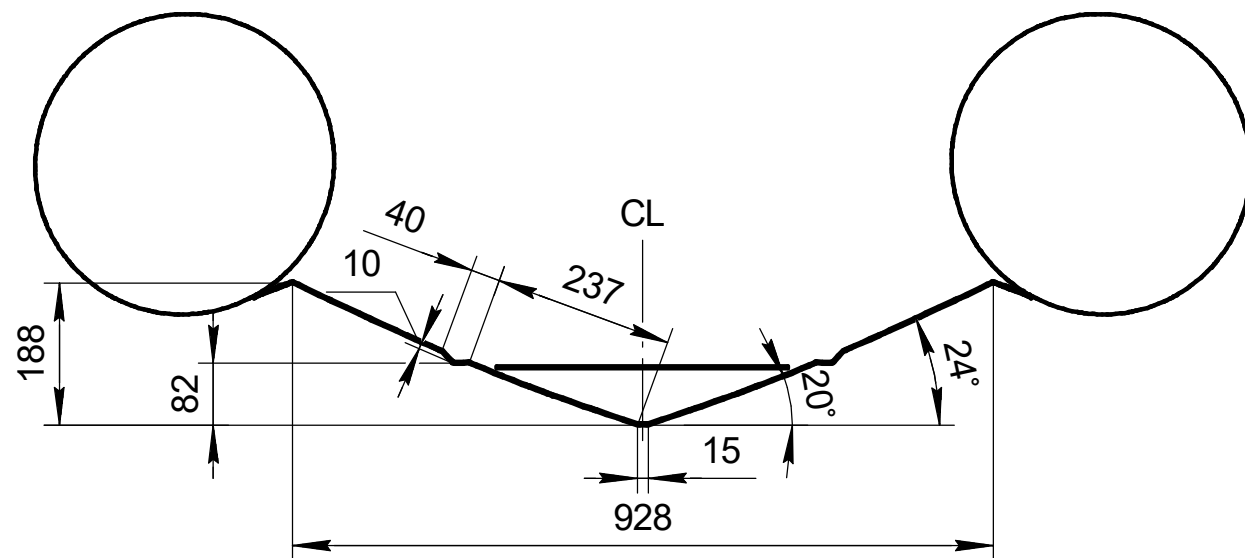
Section A



Section B



Section C



	NAME	DATE	ITEM No:
DRAWN			
CHECKED			
ENG APPR.			
MFG APPR.			
Q.A.			
			TITLE:
			<b>GALA Atlantis A330Q Hull sections for chocks design</b>
SIZE		DWG. NO.	REV
SCALE: 1:10		WEIGHT:	SHEET 1 OF 1

# Inflatable boat GALA Atlantis A360Q

## Technical drawing

### Builder's plate

**GALA**  
INFLATABLE BOATS

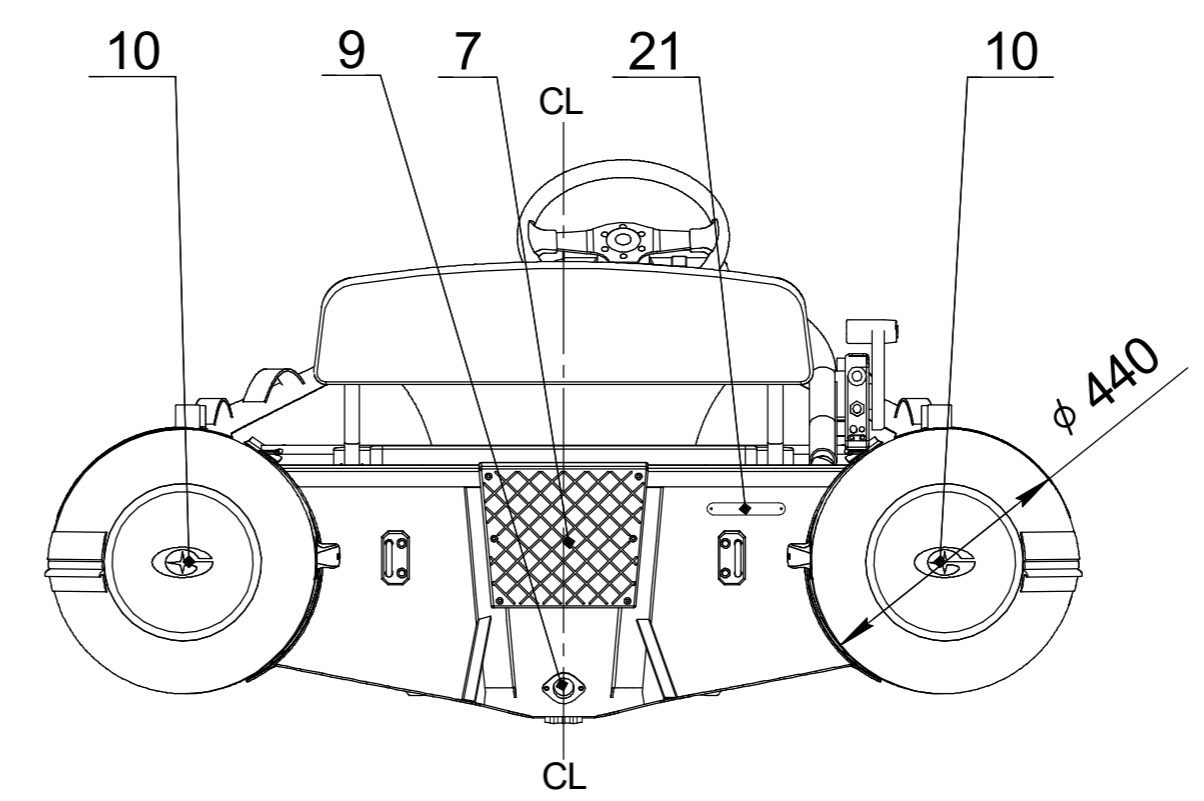
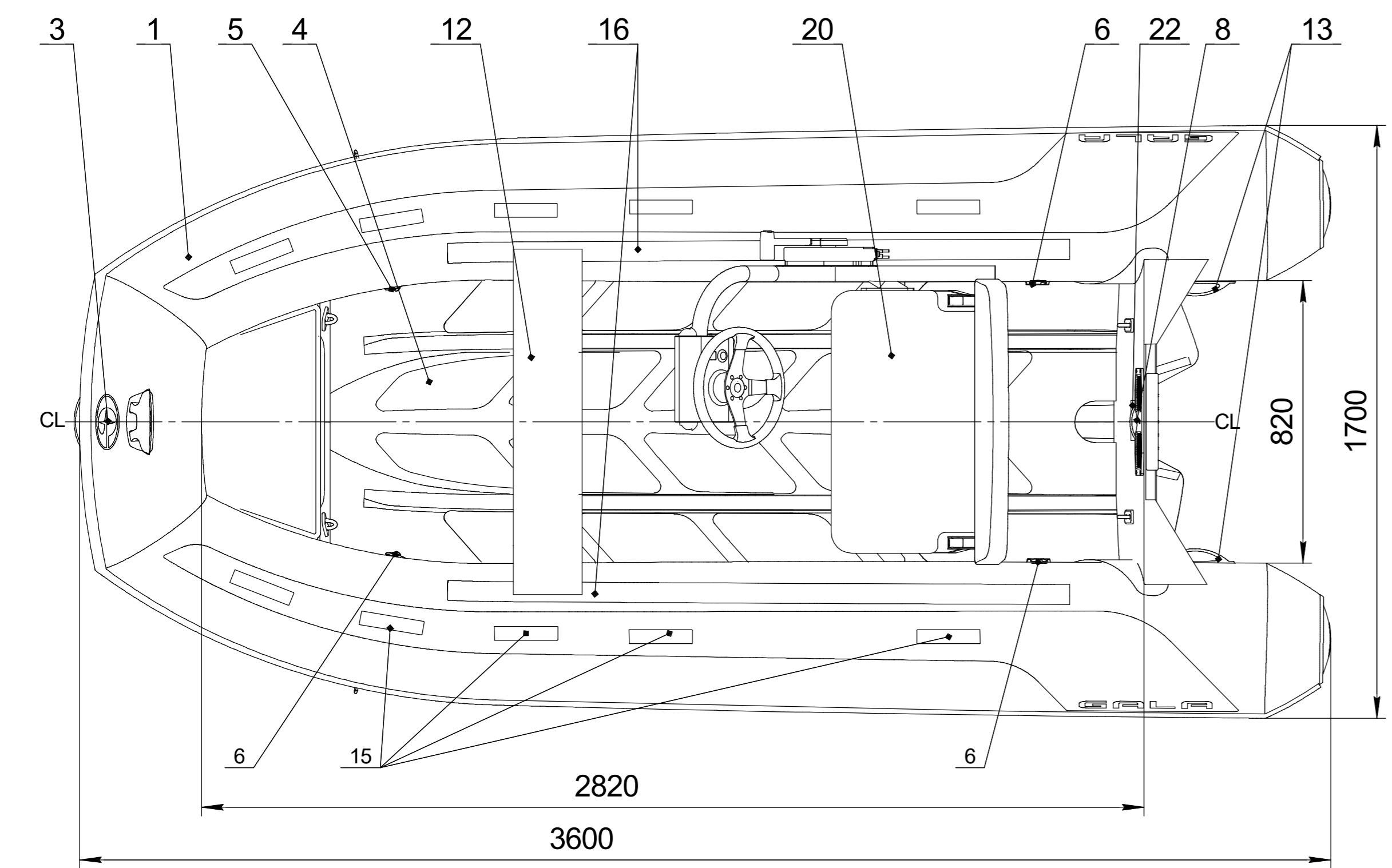
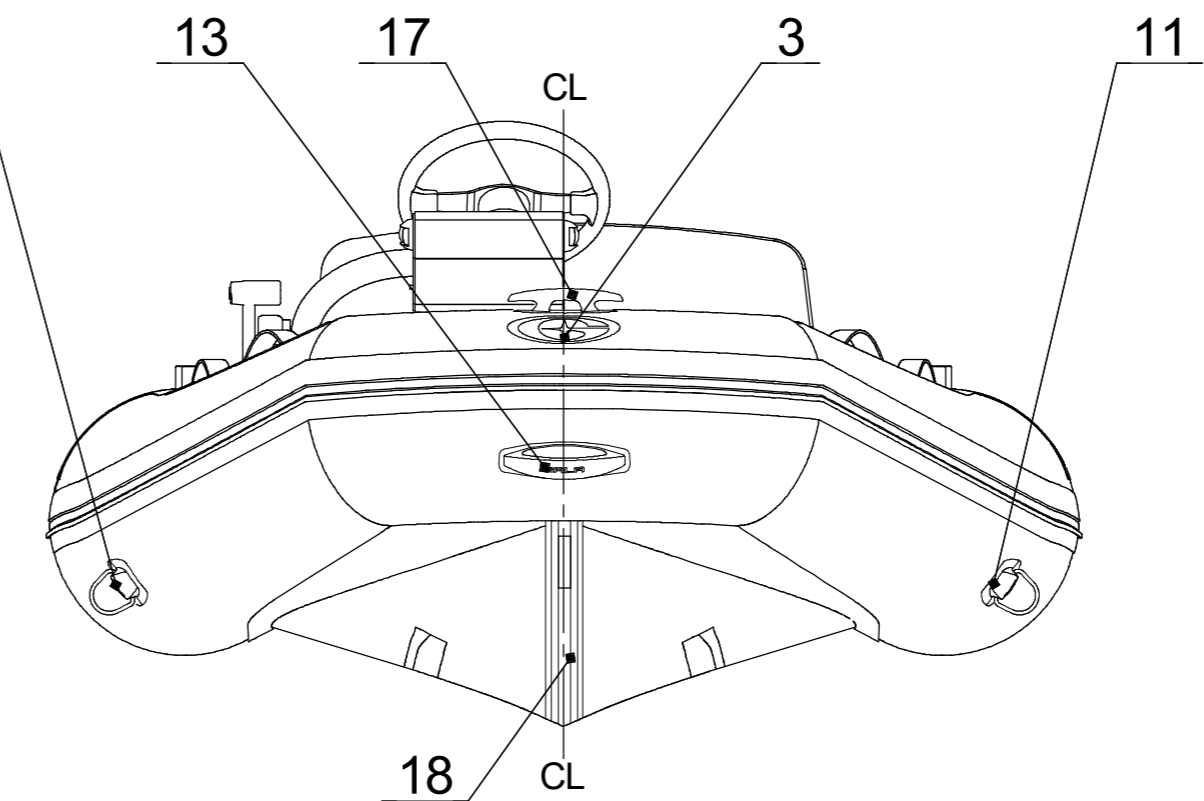
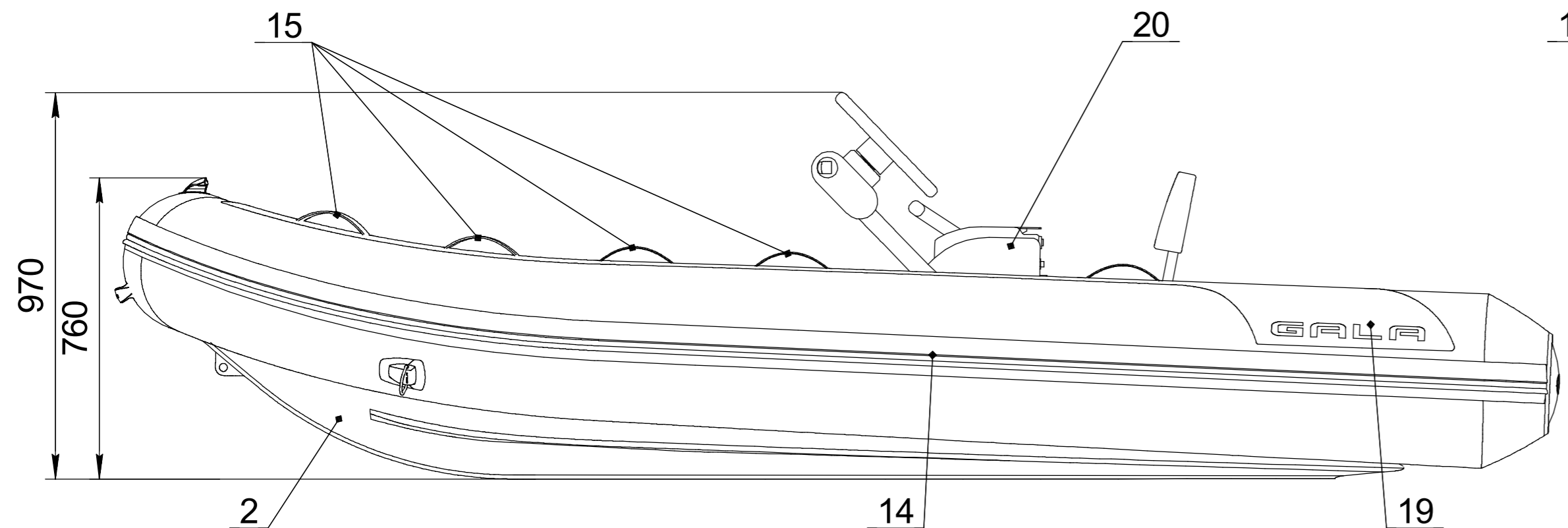
Model **A360Q**    **6** + **1**

**600** kg    **1320** lbs

**22.1** kW    **30** HP    Type **VII**

**70** kg    **154** lbs    Cat. **C**

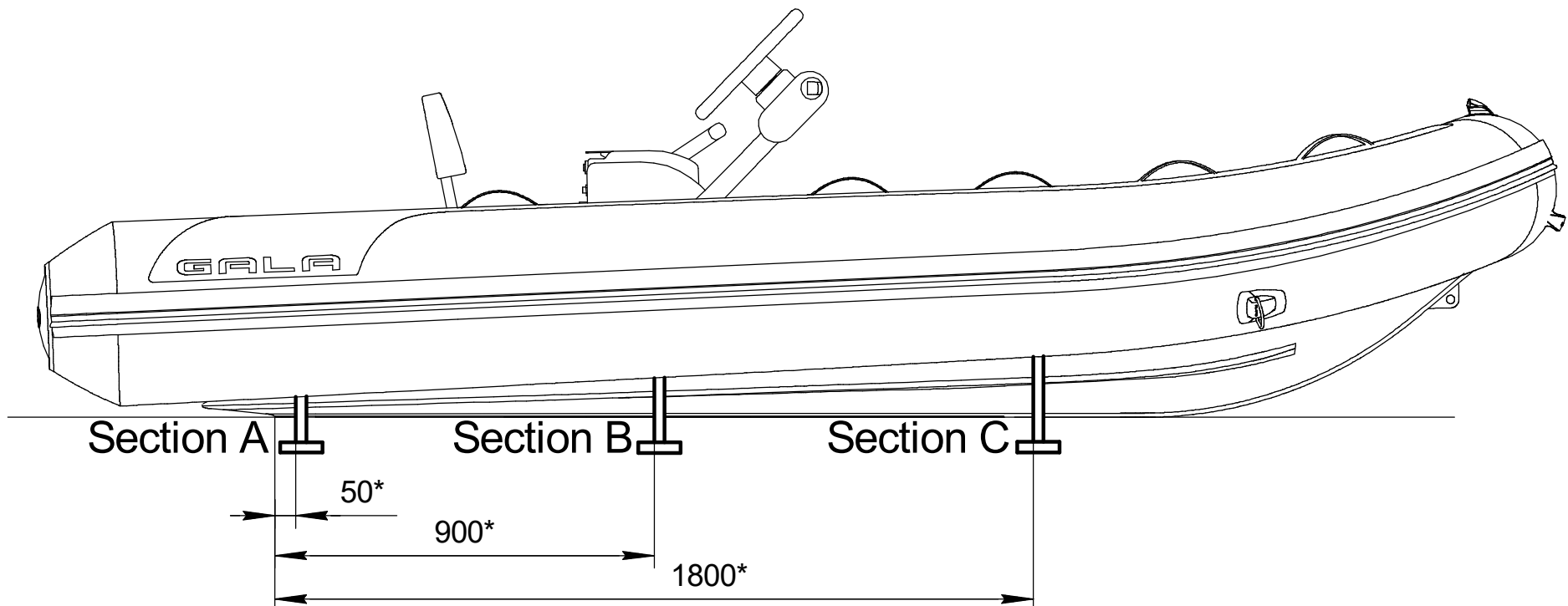
**0.2** bar    **2.89** psi    International Standard ISO/FDIS-6185



### Boat specification

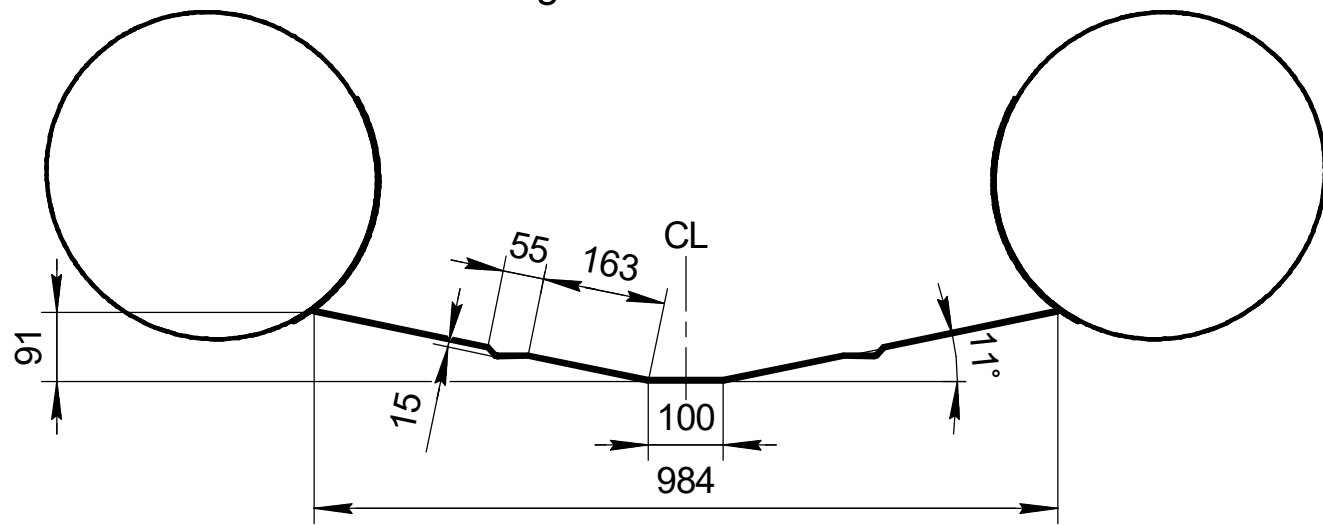
Item	Item No	Description	Q-ty	Note
1		Inflatable tube for A360Q	1	
2		Aluminum hull for A360Q	1	
3		GALA logo front	1	
4		Antiskid decking	1	
5		Over-pressure valve	1	
6		Inflation-deflation valve	3	
7		Motor plate external	1	
8		Motor plate internal	1	
9		Expanding drain plug	1	
10		Tube end, PVC	2	
11		Towing eye, PVC	2	
12		Aluminum seat	1	
13		GALA handle, PVC	3	
14		Rubbing strake	1	
15		Safety grab handle	10	
16		Seat holder	2	
17		Bow Cleat Large	1	
18		Keel protector	1	
19		GALA logo	2	
20		AQUAHELM Steering console S-08	1	
21		CIN plate	1	
22		Builder's plate	1	
23				
24				

DRAWN	NAME	DATE	ITEM No:
CHECKED			TITLE:
ENG APPR.			<b>GALA Atlantis A360Q</b>
MFG APPR.			
Q.A.			
SIZE		DWG. NO.	REV
SCALE: 1:10		WEIGHT:	SHEET 1 OF 1

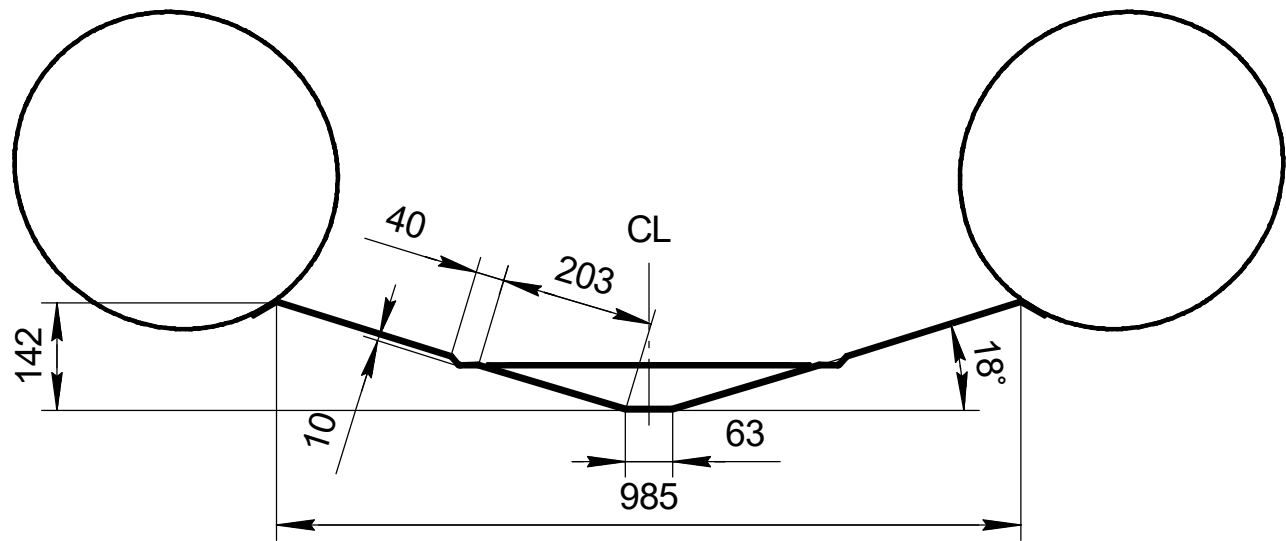


\* Dimensions are from the rear edge of the bottom.

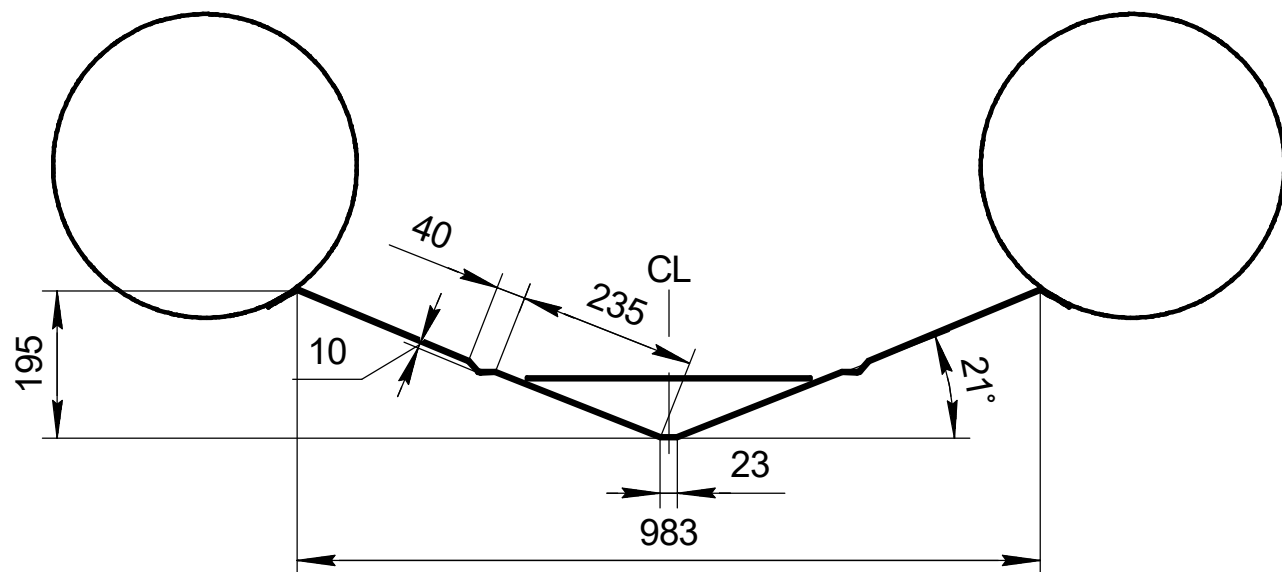
Section A



Section B



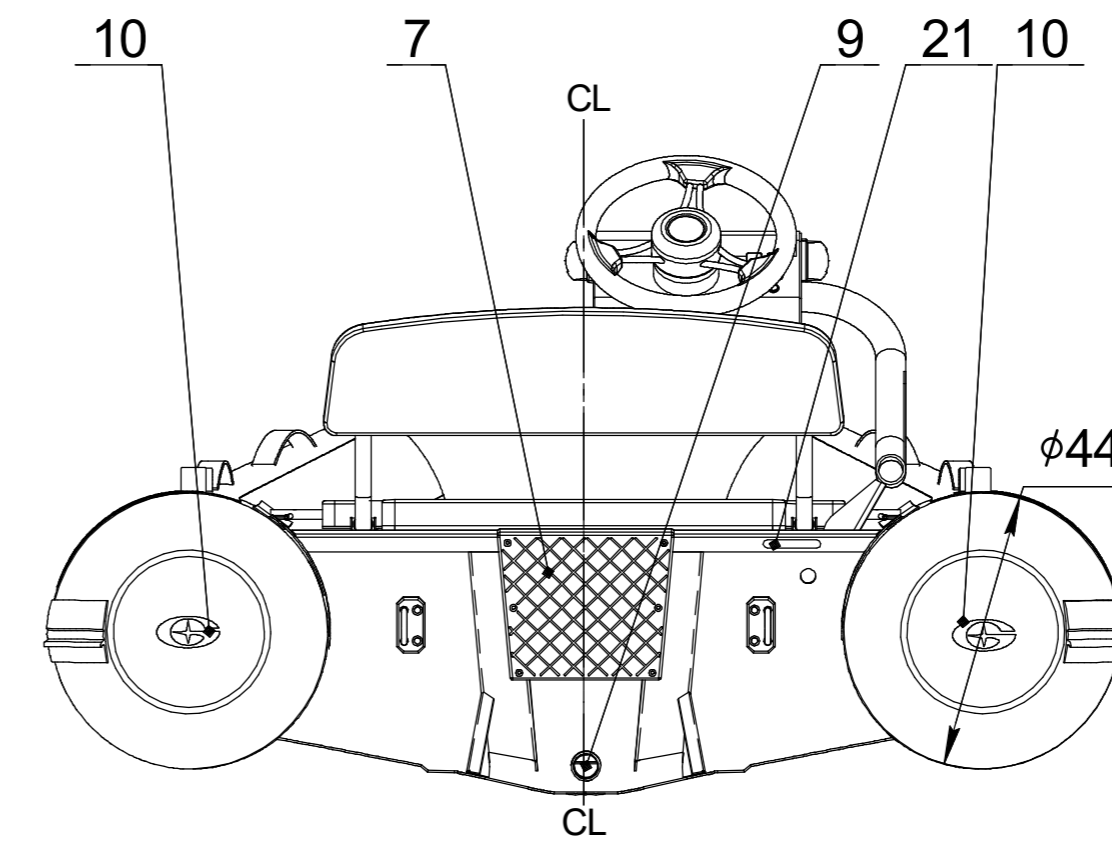
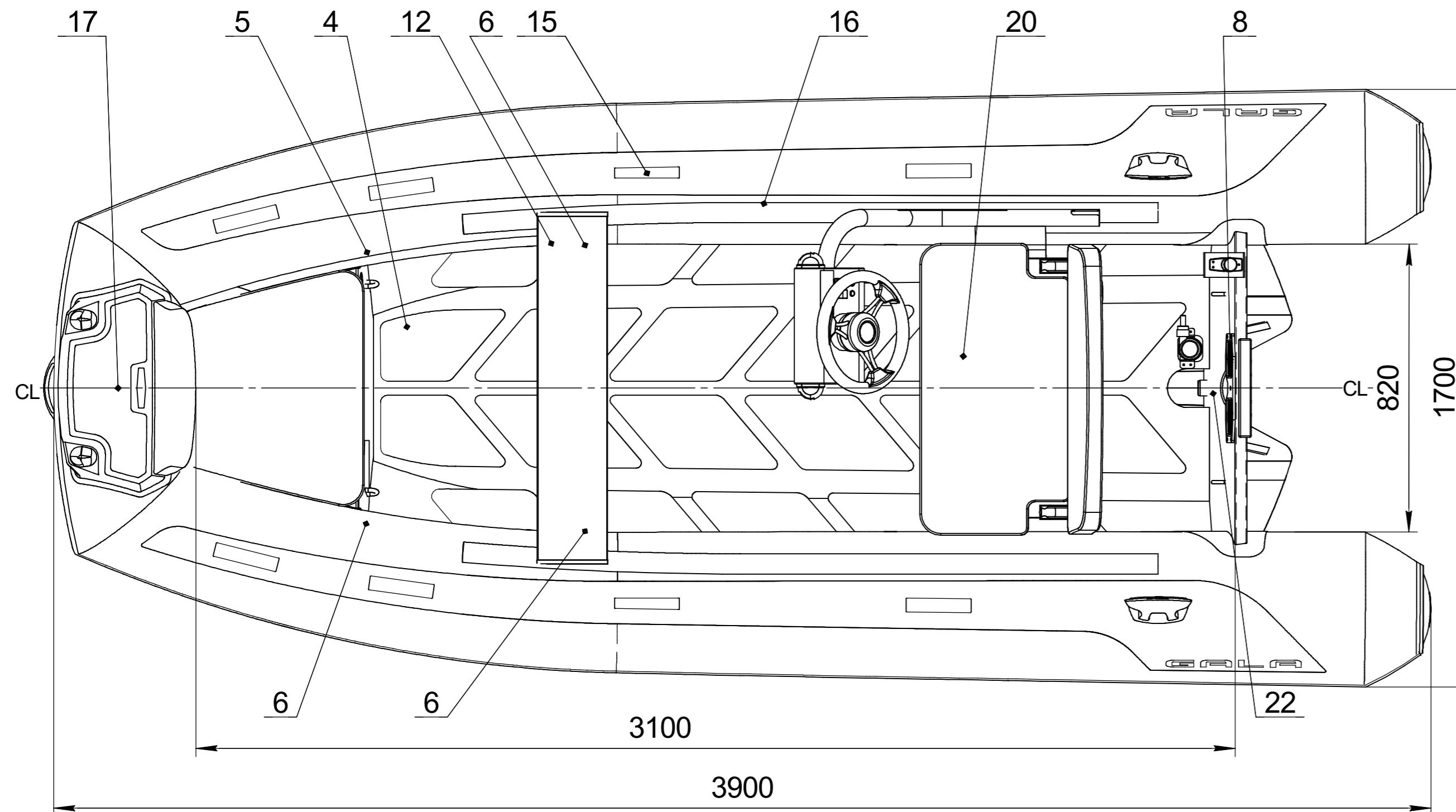
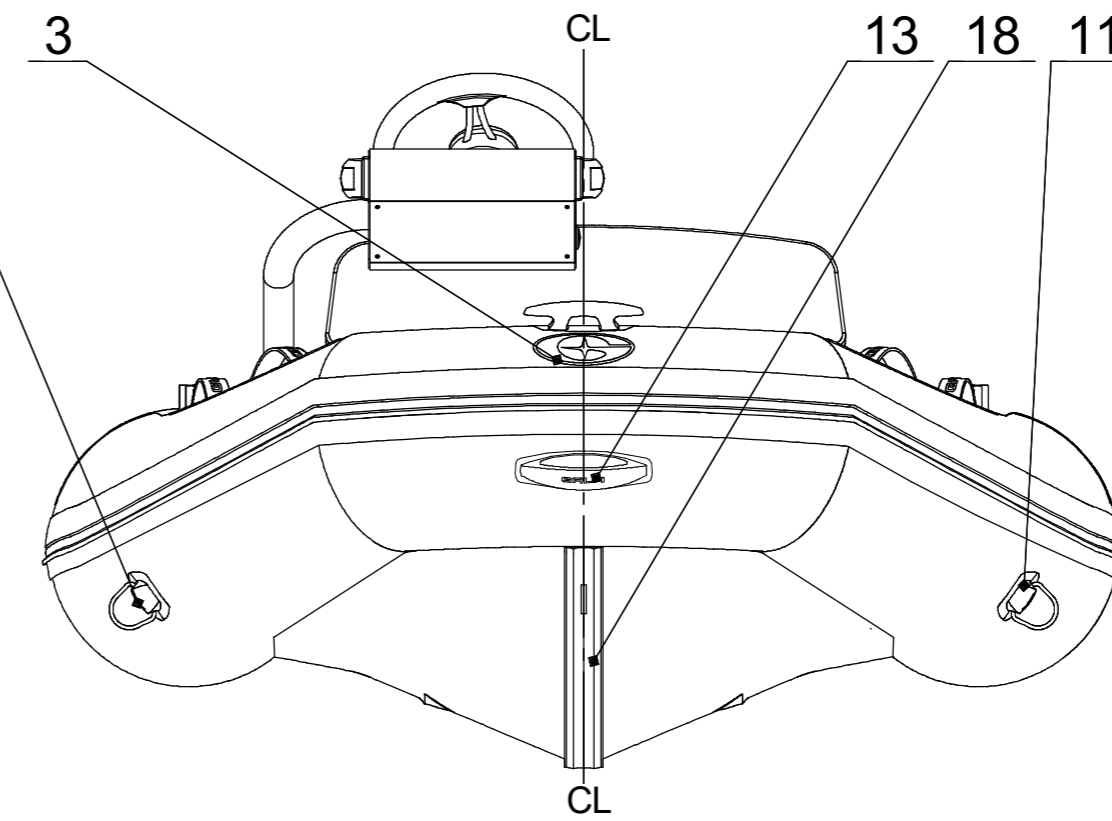
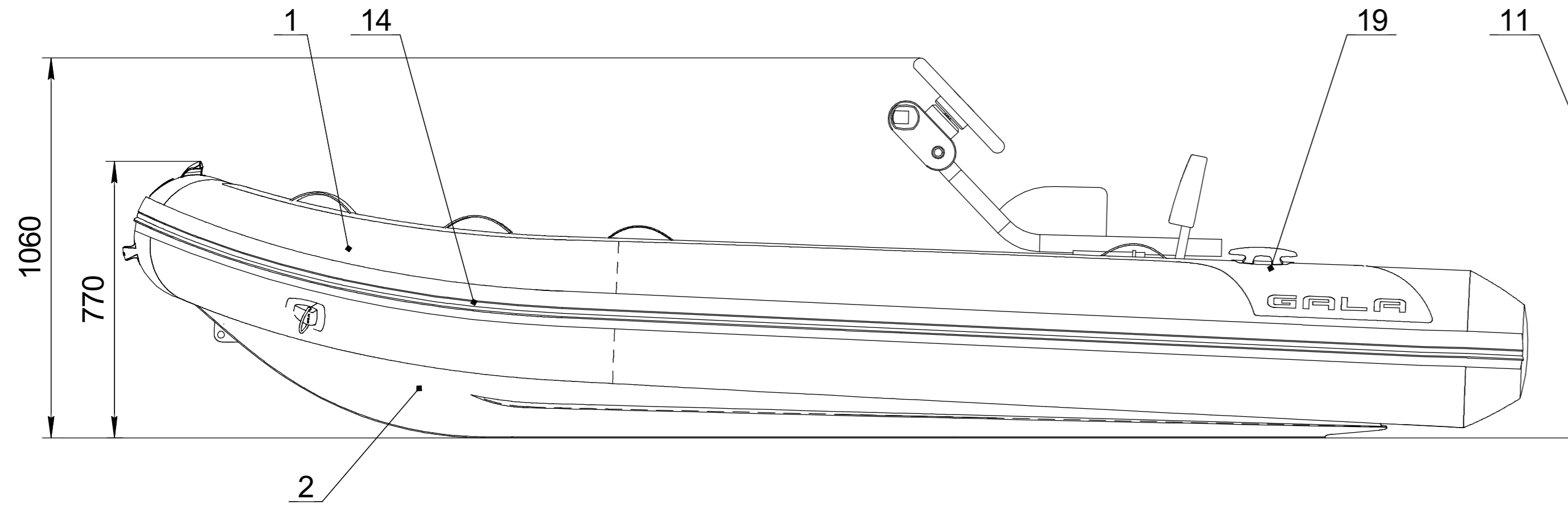
Section C



	NAME	DATE	ITEM No:
DRAWN			
CHECKED			TITLE:
ENG APPR.			<b>GALA Atlantis A360Q Hull sections for chocks design</b>
MFG APPR.			
Q.A.			
SIZE		DWG. NO.	REV
SCALE: 1:10		WEIGHT:	SHEET 1 OF 1

# Inflatable boat GALA Atlantis A390Q

## Technical drawing



### Builder's plate

**GALA**  
INFLATABLE BOATS

Model: **A390Q**    **6** + **1**

**650** kg    **1430** lbs

**22.1** kW    **30** HP    Type **VII**

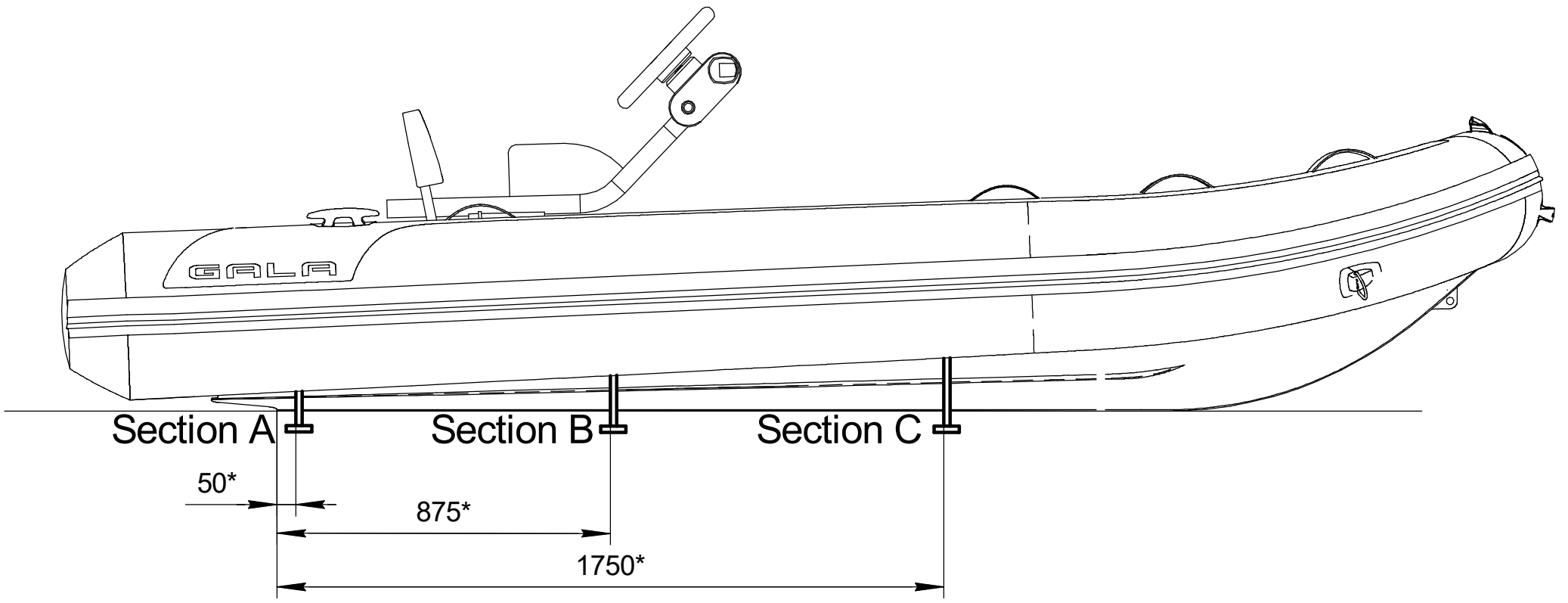
**70** kg    **154** lbs    Cat. **C**

**0.2** bar    **2.89** psi    International Standard ISO/FDIS-6185

### Boat specification

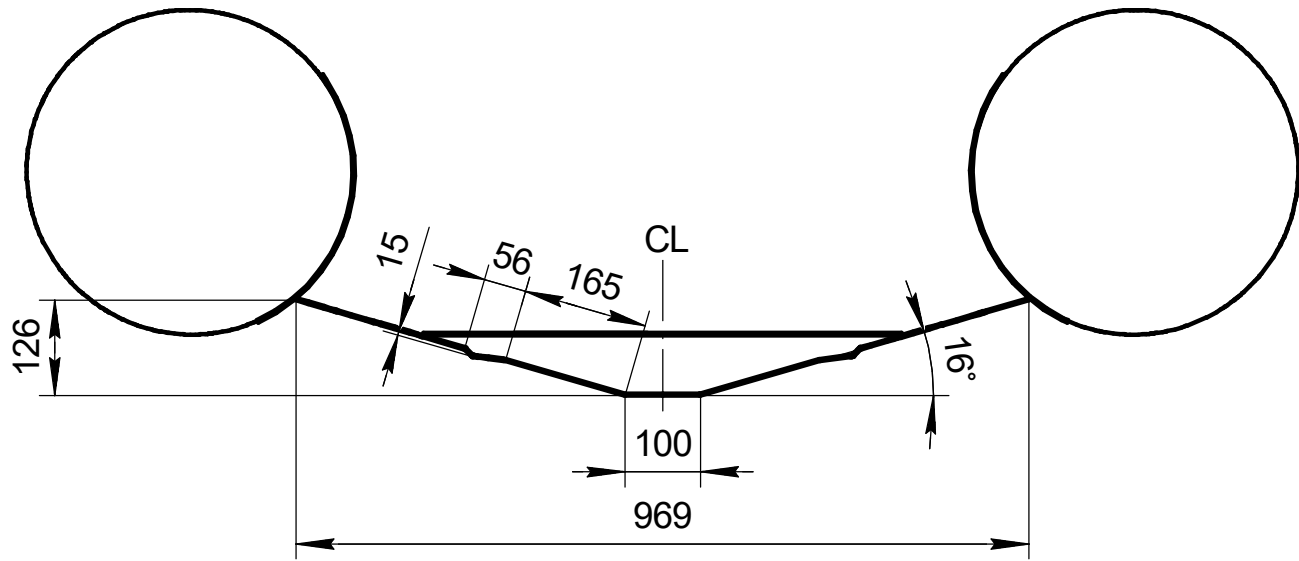
Item	Item No	Description	Q-ty	Note
1		Inflatable tube for A390Q	1	
2		Aluminum hull for A390Q	1	
3		GALA logo front	1	
4		Antiskid decking	1	
5		Over-pressure valve	1	
6		Inflation-deflation valve	3	
7		Motor plate external	1	
8		Motor plate internal	1	
9		Expanding drain plug	1	
10		Tube end, PVC	2	
11		Towing eye, PVC	2	
12		Aluminum seat	1	
13		GALA handle, PVC	3	
14		Rubbing strake	1	
15		Safety grab handle	10	
16		Seat holder	2	
17		Bow Cleat Large	1	
18		Keel protector	1	
19		GALA logo	2	
20		AQUAHELM Steering console S-08	1	
21		CIN plate	1	
22		Builder's plate	1	
23				
24				

NAME	DATE	ITEM No:
DRAWN		TITLE:
CHECKED		<b>GALA Atlantis A390Q</b>
ENG APPR.		
MFG APPR.		
Q.A.		
SIZE	DWG. NO.	REV
SCALE: 1:10	WEIGHT:	SHEET 1 OF 1

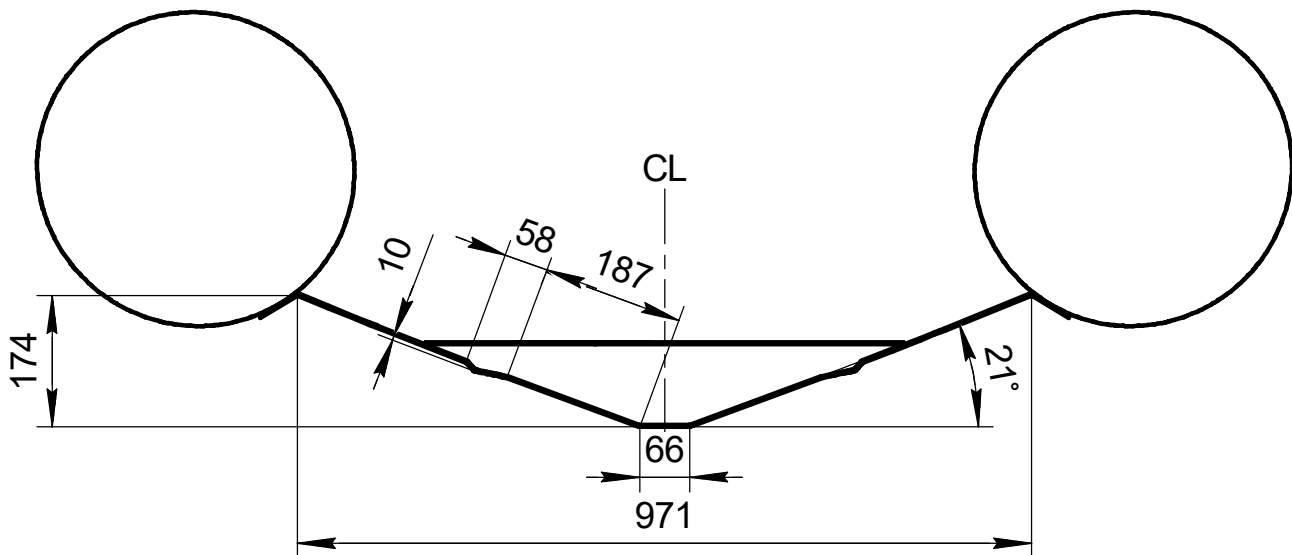


\* Dimensions are from the rear edge of the bottom.

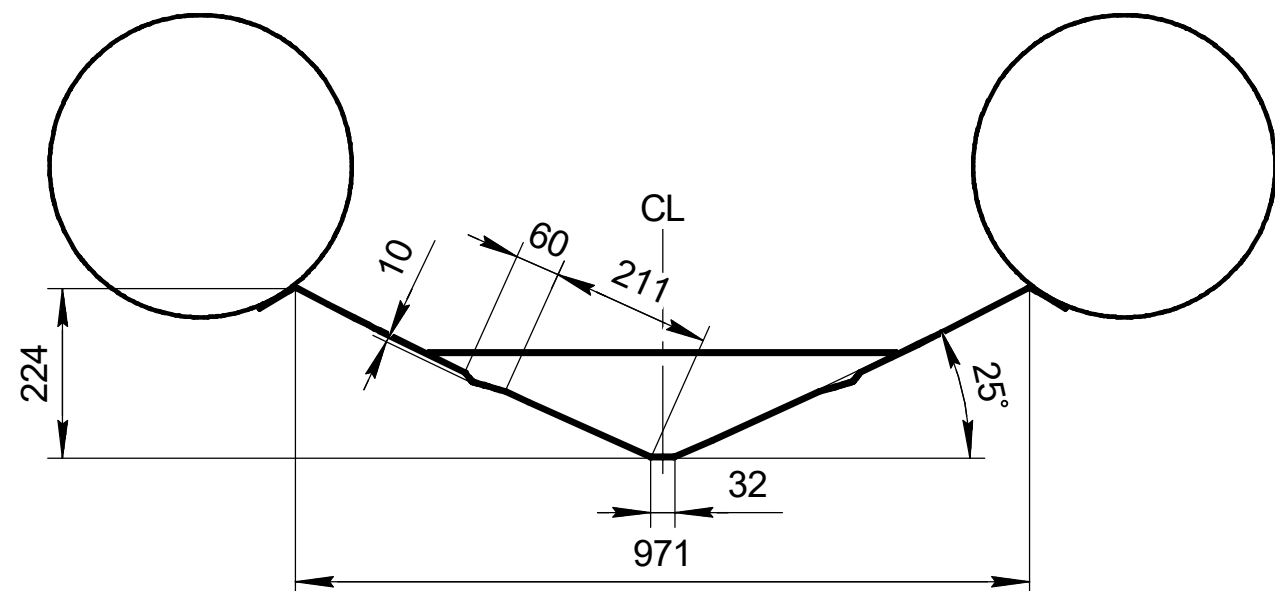
Section A



Section B



Section C



	NAME	DATE	ITEM No:
DRAWN			
CHECKED			TITLE:
ENG APPR.			GALA Atlantis A390Q Hull sections for chocks design
MFG APPR.			
Q.A.			SIZE
			DWG. NO.
			REV
			SCALE: 1:10
			WEIGHT:
			SHEET 1 OF 1